



**BEC** العربية  
ARABIA

BUILDING SUCCESS STORIES



# ABOUT US



## A Leading Construction Conglomerate in KSA

Emerging as one of the most formidable forces in the construction industry, BEC Arabia first set roots in the United Arab Emirates (UAE) in 2000, before expanding into the Kingdom of Saudi Arabia (KSA) in 2010. Today, our dynamic and diverse organization offers comprehensive, turnkey solutions in the realm of civil construction, electromechanical operations, infrastructure development, landscaping, and engineering services.

We go above and beyond contracting to provide our clients with dedicated support for all their business needs. From financing support and feasibility planning through to construction and commissioning, we facilitate every step of the process and are always on the lookout for new ways in which we can add value. We deliver certainty by completing projects on time, within specification with resources on hand for any additional requirements.

Because of our results-oriented, solutions-driven approach, we've achieved remarkable success in a short period of time, recently delivering significant mega projects in KSA with substantial contract values. This is a story of achievement for BEC Arabia and our partners, and as we take on new projects, we continue to build our legacy.





# OUR PHILOSOPHY





# Building A Legacy For Future Generations



## OUR VISION

Shaping today's built environment through innovation, quality, and sustainability.



## OUR MISSION

To develop and deliver exceptional, high-quality spaces by leveraging end-to-end expertise, strategic partnerships, technology, and deep industry experience to support the region's evolving built environment.



## OUR VALUES

### Integrity

We act with honesty and transparency in all our endeavors.

### Accountability

We are answerable for our actions and hold ourselves and others to high standards.

### Continuous Learning

We embrace a culture of continuous learning & growth.

### Innovation

We create and implement new ideas, methods, and solutions to improve and advance.



# OUR LEADERSHIP

“

## WHEN YOU BELIEVE, YOU ACHIEVE.

My journey, filled with challenges, has embodied the philosophy that believing in oneself truly leads to achieving one's goals.

When I reflect on my journey which began four decades ago, I recognize how far we've come, how grateful I am to those who were, and still are, an indispensable part of it, and also to those ardent supporters along the way.

The pillars of BEC Arabia's success are not crafted by cement and steel alone, but importantly, by our steadfast commitment and resilience. As we press ahead, I am confident that our mantra of "believing to achieve" will bolster the trajectory of our growth, burnishing the legacy of excellence we've sustained over the years.

Thank you for being part of BEC Arabia's story. As we continue to build upon this impressive lineage, I firmly believe that the best is yet to come.

**Gamal Mustafa**  
**Founder & Chairman**





“

## **FORGING A FUTURE DEFINED BY EXCELLENCE.**

Over the years, we have conquered numerous challenges, persevered when faced with adversity, and continuously honed our skills to offer unparalleled service to our clients. As we take immense pride in our accomplishments, we do not rest on our laurels. Our growth story is not over.

We are actively writing new chapters, driven by our relentless pursuit of innovation and excellence. Our eyes are keenly set on the future, as we forge ahead to establish a regional presence and further consolidate our place as an industry leader.

It is through the same spirit of determination, strength of conviction, and passion for our work that we shall continue to strive for greater milestones. I am confident that with the strength brought forth by our exceptional team and valuable partners, the best is yet to come for BEC Arabia.

**Bakhit Aldosari**  
**Vice Chairman & Managing Partner**





# OUR JOURNEY

1998

**BEC** العربية  
ARABIA

BEC Arabia established its footprint in Sharjah, United Arab Emirates, heralding a new chapter in the regional construction industry.

2005

Demonstrating our architectural expertise, we successfully completed the design and construction of a high-rise tower with over 50 floors.



2009



BEC Arabia fortified its presence in the Middle East by establishing its regional headquarters in Saudi Arabia.

2012

The crowning moment arrived in 2012 when the Chairman was honored by King Abdullah Bin Abdulaziz for his noteworthy accomplishments.



2015



Building on our reputation, BEC Arabia lands the monumental  $\text{AED}$  3.4 billion EPC contract for the Ministry of Interior.

2001

The rapidly growing company expanded its footprint across the Emirates with a presence in Dubai, Fujairah, and Ras Al Khaimah.



2007

The Company achieved a remarkable milestone by delivering a  $\text{AED}$  750 million project in an impressive 24-month timeframe.

2010

The Company earned recognition for its efforts, securing the prestigious  $\text{AED}$  1.3 billion Ramada Housing Project in Saudi Arabia.



2013

This year brought another feather in our cap with a Tier-1 contracting classification awarded by the Ministry of Housing and Internal Affairs (MOMRA).

2016

**BEC**

العربية | الحلول الخرسانية  
ARABIA | CONCRETE SOLUTIONS

BEC Arabia established its versatile subsidiary, Concrete Solution. A strategic move that proved successful with the prompt and stellar delivery of 60 schools using their advanced in-house pre-cast capabilities.



## 2017

The Company expanded its portfolio by establishing a real estate subsidiary. Its inception was marked by a successful  $\text{SAR}$  130 million investment in a real estate capital fund, underlining the company's robust growth strategy.



## 2020

Demonstrating a commitment to social responsibility, BEC Arabia Real Estate signed an MOU with the Minister of Housing, Majid Al Hogail to develop 18,000 housing units, making a significant contribution to the Social Housing Program.

## 2022

BEC Arabia further expanded its portfolio by securing the Real Estate Development agreement for the notable Hampton by Hilton Hotel in NEOM.



## 2024

Building on its legacy, BEC Arabia delivered over  $\text{SAR}$  6 billion in infrastructure, residential, and hospitality projects across The Red Sea, including NEOM and AMAALA (RSG), reinforcing its contribution to Saudi Arabia's rapid urban and tourism development.



## 2019

We successfully completed the monumental KAP2 (King Abdullah Project for the Development of Security Headquarters - Phase 2). The outstanding accomplishment was recognized by distinguished dignitaries and officially inaugurated by His Highness Abdulaziz Bin Saud Al Saud, the Minister of Interior.



## 2021

This year marked a significant achievement with the award of two major PPP projects: STC Square and Wave 2 Schools. The combined value of these high-profile projects was an impressive  $\text{SAR}$  2 billion.



## 2023

The Company lands the multi-billion mega project Sindalah Island in NEOM in addition to the AMAALA Employee Village by Red Sea Global.





# GROUP STRUCTURE

BEC Arabia brings together 7 companies and 10,000+ specialists in contracting services, concrete solutions, landscaping, facility management, real estate development and investments, financing solutions, and much more. By recognizing collaboration as the defining quality for success, we form extraordinary partnerships within our group – and with our clients.



BEC Arabia Contracting has emerged as one of the premier tier-1 contractors in KSA, offering the full spectrum of construction services.



BEC Arabia boasts cutting-edge, fully automated concrete plants, producing superior-quality concrete products rapidly. Our advanced technology ensures both precision and efficiency, meeting client demands with unparalleled reliability and excellence.



BEC Arabia manages and invests in real estate development projects in the Saudi residential and mixed-use real estate markets, playing a pivotal role in realizing real estate targets and delivering unique lifestyle experiences.



ProService international specializes in providing top-tier solutions for electro mechanical building services and industrial process utilities systems, establishing itself as our MEP powerhouse.



Externa Arabia focuses on comprehensive landscaping & urban development, including the construction of sports fields, golf courses, and sustainable infrastructure services.



Eurolit specializes in various construction, finishing and flooring, and building infrastructure related services.



Green Dimensions Arabia specializes in landscaping and outdoor services, including golf course design, plant nursery management, and tree transplanting, catering to diverse green space needs.





# GROUP IN NUMBERS



**25**

YEARS IN  
CONSTRUCTION



**120**

PROJECTS  
DELIVERED



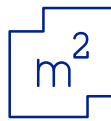
**₺ 20 BILLION**

VALUE OF COMPLETED  
PROJECTS



**₺ 3.5 BILLION**

VALUE OF ONGOING  
PROJECTS



**5 MILLION**

TOTAL OF  
BUILT-UP AREAS



**7**

CONCRETE  
PRODUCTION PLANTS



**100 MILLION**

HOURS OF  
SAFETY\*

\*Without Loss Time Injury (LTI)



**10,000**

PROFESSIONALS IN OUR  
TALENT POOL



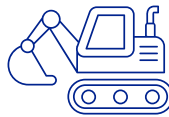
**600**

ENGINEERS &  
TECHNICIANS



**2,000**

SUPPLIERS &  
CONTRACTING PARTNERS



**1000**

PLANTS, MACHINERY,  
AND VEHICLES



**6**

INTERNATIONAL  
CERTIFICATES\*

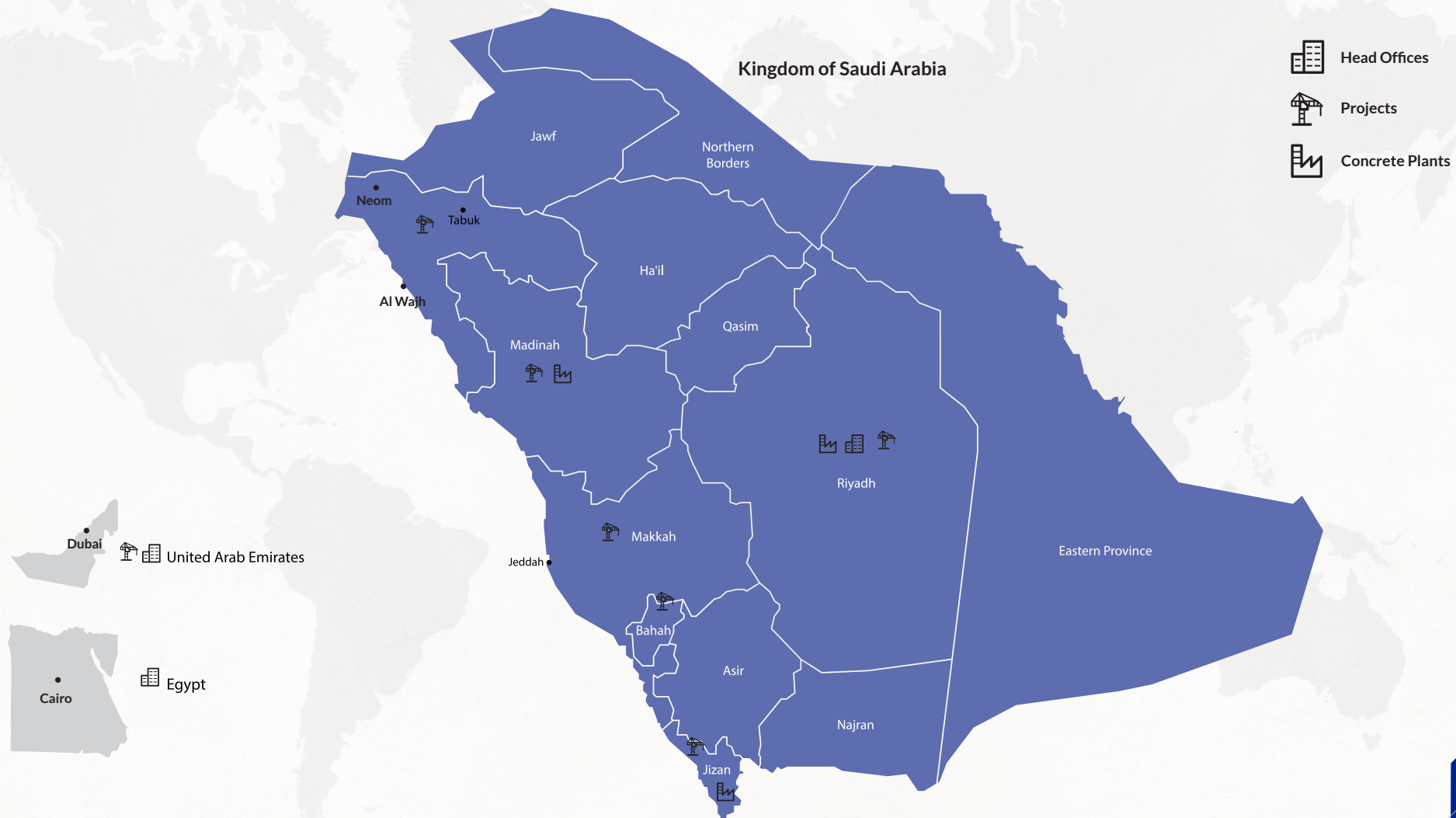
\*In Integrated Management Systems





# GEOGRAPHICAL SPREAD

BEC Arabia boasts a robust presence across the Southern, Western, and Central regions of Saudi Arabia, with its headquarters strategically located in Riyadh. The company operates an extensive network of regional offices, workshops, and facilities at key project sites, ensuring operational efficiency and proximity to major developments. With a total of seven concrete plants, BEC Arabia manages ready-mix plants in Riyadh, Madinah, the outskirts of Makkah, and Jazan, along with a state-of-the-art precast plant in Jazan, reinforcing its capacity to deliver high-quality concrete solutions across the Kingdom.





A large yellow tower crane is the central focus of the image, extending from the bottom left towards the top right. It has a lattice boom and a red counterweight. In the background, another smaller crane and some construction structures are visible. The sky is a pale, overcast blue.

# OUR EXPERIENCES & EXPERTISE

Through our broad spectrum of services, we are committed to delivering superior operational efficiency and enhanced value engineering, providing our clients with innovative solutions of the highest caliber.



# Excellence At Every Step



## Turnkey Contracting

With our engineering and contracting expertise, reinforced by a large pool of talent, we have the capacity to undertake and deliver complex, large-scale ventures by providing all the fundamental services, including the development of infrastructure and superstructure construction.



## Infrastructure

We deliver comprehensive infrastructure services tailored to the diverse needs of modern construction projects. With extensive experience in managing and executing infrastructure work, we offer end-to-end solutions from earthwork and road construction to advanced utility systems.



## Landscaping & Plantation

In line with Vision 2030 and Saudi afforestation ambitions, BEC Arabia offers sustainable plantation, vegetation, and transplantation services, aimed at saving water and energy, in addition to utilizing unused spaces and converting them into life-enhancing sources.



## Electro-Mechanical Services (MEP)

We provide efficient and sustainable solutions across mechanical, electrical, and plumbing systems. With a highly skilled in-house team, we ensure seamless integration into building designs, enhancing performance and reliability while maintaining the highest standards of quality.



## Facade & Fitout Solutions

We offer a full range of façade and fit-out services, ensuring every project is handled precisely and carefully. Our experienced team works closely to deliver bespoke solutions that align with their vision and exceed expectations.



## Concrete Solutions

We offer expert concrete services, delivering high-quality, ready-mixed concrete for projects of all sizes. Our team ensures timely, precise delivery and consistent performance, providing durable and efficient solutions that meet the specific needs of each construction project.



## Flooring Solutions

Our flooring solutions are designed to blend durability, functionality, and elegance, catering to a wide range of industrial, commercial, and residential applications. Focusing on precision and superior materials, we ensure flawless installation and long-lasting performance, delivering exceptional quality that enhances form and function.



## Real Estate Investment & Development

BEC Arabia provides comprehensive real estate investment services, specializing in social and affordable housing solutions. Our team oversees every development lifecycle stage, from land acquisition to after-sales service, ensuring a seamless and integrated process.



## Financing Solutions

We provide premier structured financing and project management solutions tailored for critical and social infrastructure projects in developing and emerging markets. We specialize in delivering structured EPC+F solutions that connect diverse funding sources through support.



## Facility Management

Our integrated facility management solutions are designed to ensure maximum operational excellence and performance. We ensure seamless operations and maintenance by offering all-encompassing solutions, bringing every aspect of facility management together to guarantee efficiency and reliability.





# OUR PROJECTS

We've built a prestigious portfolio of projects across a wide range of sectors, from expansive government mega projects and hospitality developments to commercial complexes and educational institutions. Every project is meticulously planned, expertly designed, and delivered with the highest standards of quality and an unwavering commitment to our clients.



HOSPITALITY &  
LUXURY DEVELOPMENT



GOVERNMENT FACILITIES



RESIDENTIAL



COMMERCIAL



HEALTHCARE



EDUCATION



HIGHRISE



RELIGIOUS



ENTERTAINMENT



FAST TRACK



INFRASTRUCTURE



LANDSCAPE



# HOSPITALITY & LUXURY DEVELOPMENT





# The Sindalah Island



HOSPITALITY



FAST TRACK

## Project Overview

Nestled in the heart of NEOM, Sindalah Island is an exclusive luxury destination spanning over 840,000 m<sup>2</sup> of breathtaking landscapes and a pristine marine ecosystem. Designed to redefine ultra-premium tourism, the island will offer an unmatched hospitality experience featuring world-class resorts, opulent residences, an iconic golf club, a vibrant beach club, and state-of-the-art marinas catering to the global yachting community.

Sindalah seamlessly integrates sustainability with architectural excellence, ensuring a balance between luxury and environmental preservation. As a key pillar of NEOM's bold vision.

**Location:**

**Consultant:**

**Client:**

**status**

Sharma

AECOM

NEOM

Ongoing



**Contract Value**

¥ 3bn





# ORAYA

AN AUTOGRAPH COLLECTION HOTEL





# ORAYA, An Autograph Collection Hotel



HOSPITALITY



FAST TRACK



## Project Overview

Set in the heart of Sindalah, The Autograph Collection Hotel by Marriott is an ultra-luxury 5-star resort designed for those seeking exclusivity, elegance, and unparalleled comfort. Offering a seamless blend of sophistication and tranquility, the resort features 16 private villas, each with its own pool, and 50 exquisitely designed luxury rooms, all set against the stunning backdrop of Sindalah's pristine coastline.



**Location:**  
**Consultant:**  
**Client:**  
**Status:**

Sharma  
AECOM  
NEOM  
Completed





# SINDALAH BEACH CLUB





## Beach Club by MDL BEAST



ENTERTAINMENT



FAST TRACK

### Project Overview

Sindalah Beach Club is a vibrant and glamorous global hub designed to celebrate cultural diversity and creativity. This exclusive destination features a relaxing pool, a high-end restaurant, and private dining facilities, offering guests a refined space to unwind and indulge. As the ultimate venue for cutting-edge events, Sindalah Beach Club will host a dynamic music program curated by the world-class production company MDLBEAST, featuring performances by renowned DJs and artists.

**Location:**  
**Consultant:**  
**Client:**  
**Status:**

Sharma  
AECOM  
NEOM  
Completed





# SINDALAH GOLF CLUB







## Project Overview

Sindalah Golf Club stands as an architectural landmark with its stunning leather-textured turtleback roof and top-tier facilities, ensuring an unmatched golfing experience. Operated by IMG, this luxurious golf club boasts a state-of-the-art service basement, cutting-edge golf simulators, specialized training suites, and a complete lobby for hosting visitors.

**Location:**  
**Consultant:**  
**Client:**  
**Status:**

Sharma  
AECOM  
NEOM  
Completed





# HAMPTON BY HILTON I & II





# Hampton by Hilton I & II



HOSPITALITY

## Project Overview

Two 3-stars hotels and business centers spanning more than 10,000 m<sup>2</sup> and features 201 rooms, an outdoor pool, a gym, and an international restaurant. Complete with all FOH and BOH amenities and designed with advanced energy systems in line with NEOM's wider environmental goals.

**Location:** Sharma  
**Consultant:** Consolidated Consultant Group  
**Client:** BEC Real Estate & Cayan Group  
**Status:** Completed



Contract Value

330mn





# GOVERNMENT FACILITIES & PUBLIC BUILDINGS





## KAP 2

### Development of the Security Facilities



#### Project Overview

Covering 1.5 million m<sup>2</sup>, this comprehensive multi-zone development is designed to cater to the needs of Ministry of Interior personnel and their families.

Home to 75,000 residents, this fully integrated community features 30 modern residential buildings, medical centers, training facilities, a shooting range, an auditorium, a mosque as well as dedicated sports and recreation areas. With advanced security systems, landscaped green spaces, and modern infrastructure, the development ensures a safe, comfortable, and high-quality living environment.

**Location:** Western Region  
**Consultant:** NKY Architects and Engineers  
**Client:** Ministry of Interior  
**Status:** Completed



**Contract Value**

3.04bn





# KAP 5

## Development of the Security Facilities





## KAP 5

### Development of the Security Facilities



#### Project Overview

A comprehensive development designed to provide state-of-the-art facilities for members of public security services. Our scope of work encompasses the delivery of a wide range of essential infrastructure, including housing facilities, schools, mosques, theatres, military barracks, administrative buildings, training centers, and recreational complexes. These facilities are specifically tailored for various branches of public security, including civil defense services, fire services, police forces, the passports division, as well as special security and investigative units.

**Location:**

Southern Region

**Consultant:**

Gesbau Italconsult SPA

**Client:**

Ministry of Interior

**Status:**

Ongoing



**Contract Value**

1.15bn





# NEOM - FAST TRACK PROJECTS





## NEOM - Fast Track Projects



FAST TRACK

### Project Overview

The scope of work includes the design & building of five temporary assets in the Logistics Park of NEOM including the Technology and Digital Hub, Executive Management Offices, Multipurpose Halls and Meeting Rooms, Urban Planning Museum and Exhibition Center, and the Media Livability Assets.

**Location:**  
**Consultant:**  
**Client:**  
**Status:**

Sharma  
AECOM  
NEOM  
Completed



**Contract Value**

650mn





# SINDALAH CONSTRUCTION VILLAGE





# Sindalah Construction Village



FAST TRACK

## Project Overview

A state-of-the-art facility designed to provide housing, amenities, and a high standard of living, the Sindalah Construction Village sets a new benchmark for workforce accommodation in remote locations. Featuring over 4,000 residential units tailored to all employee levels, the village offers a balanced blend of comfort, privacy, and functionality.

**Location:**  
**Consultant:**  
**Client:**  
**Status:**

Sharma  
AECOM  
NEOM  
Ongoing



**Contract Value**

350mn





# NEOM LOGISTICS PARK





# NEOM Logistics Park



FAST TRACK

## Project Overview

A premium Executive Construction Village in NEOM to accommodate senior personnel involved in the project's execution. The village includes high-quality accommodation and essential amenities such as dining, recreation, and meeting facilities. Built with sustainability and comfort in mind, the village supports NEOM's vision by providing a secure, efficient, and modern living environment for key executives.

**Location:**  
**Consultant:**  
**Client:**  
**Status:**

Sharma  
AECOM  
NEOM  
Completed



**Contract Value**

150mn





# RESIDENTIAL





# AMAALA Employee Village



RESIDENTIAL

## Project Overview

Spanning over 1.44 square kilometers, the AMAALA Employee Village is designed to accommodate nearly 20,000 employees working across the prestigious AMAALA and Triple Bay masterplans. The development offers more than 12,000 residential units, providing a diverse range of living spaces that emphasize comfort, sustainability, and modern design.

In addition to the residential units, the development features several retail buildings, a mosque, a sports center, and recreational facilities, creating a central hub for employees to live, work, and relax.

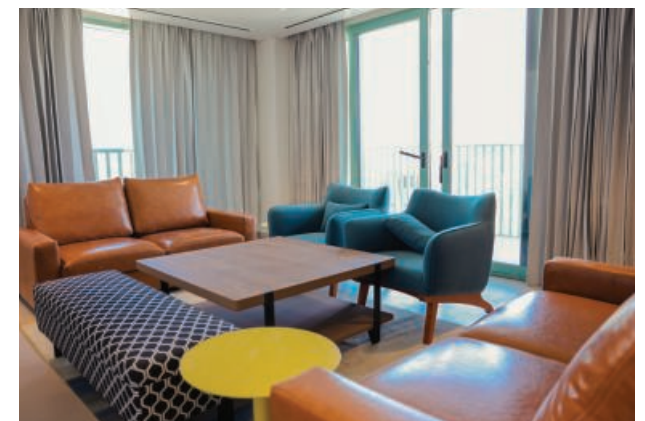
**Location:**  
**Consultant:**  
**Client:**  
**Status:**

AMAALA  
Parson  
Red Sea Global  
Ongoing



**Contract Value**

1.7bn





# RAMADA HOUSING





# Ramada Housing



RESIDENTIAL

## Project Overview

A premium residential complex designed to foster community living while prioritizing sustainability. The project features 995 villas and encompasses a wide range of comprehensive amenities, including medical centers, sports stadiums, recreational facilities, community halls and mosques. In addition, it includes six schools that aim to enhance educational opportunities for residents and promote a thriving community environment.

**Location:** Jazan  
**Consultant:** Zuhair Fayez Partnership  
**Client:** King Abdullah Bin Abdulaziz Foundation for Housing Development  
**Status:** Completed



Contract Value

1bn





# WADI AL HADA COMPOUND





# Wadi Al Hada Compound



RESIDENTIAL

## Project Overview

A residential compound that spans over 150,000 m<sup>2</sup> and features 540 houses in a 5-star resort-style compound that integrates harmoniously with Wadi Hanifa, redefining residential living experiences for expatriates. This property Includes a range of amenities including swimming pools, sports courts, recreational areas, social and dining locations, a gym, and retail shops. BEC Arabia is proud to serve as an equity partner in this project, investing over SAR 135 million.

**Location:**

Riyadh

**Consultant:**

Saudi Consultant

**Client:**

Wadi Hanifa Real Estate

**Status:**

Completed



**Contract Value**

800mn





# AL ARDA HOUSING





# Al Arda Housing



RESIDENTIAL

## Project Overview

BEC Arabia's Real Estate subsidiary presents Alarda Projects Phase I & II in Jazan, offering sample residential spaces with modern design, sustainability, and advanced amenities. The development focuses on quality and timely delivery, creating a vibrant community with landscaped gardens, state-of-the-art facilities, and convenient access to services.

The Project is now completed emphasizes offering affordable housing for a wide range of income groups, featuring modern infrastructure, green spaces, and amenities. Its sustainable design and collaborative planning contribute to job creation and drive economic growth in the region.

<b>Location:</b>	Jazan
<b>Consultant:</b>	CIE Consultants
<b>Client:</b>	National Housing Company
<b>Status:</b>	Completed



Contract Value

360mn





# COMMERCIAL





# STC Square



COMMERCIAL

## Project Overview

A mixed-use smart development sitting on 120,000 m<sup>2</sup> and features six sleek towers, a sophisticated hotel, and a vibrant mix of commercial and office spaces.

Designed with sustainability at its core, this cutting-edge development features an automated parking system, an innovative waste management system, and a solar system. In addition to an advanced digital media screen covering an impressive 2,600 m<sup>2</sup>, the largest of its kind in commercial development in Saudi Arabia.

**Location:**  
**Consultant:**  
**Client:**  
**Status:**

Riyadh  
Saud Consultant  
AQALAT  
Ongoing



Contract Value

650mn





# LA GARA TOWER





# La Gara Tower



COMMERCIAL

## Project Overview

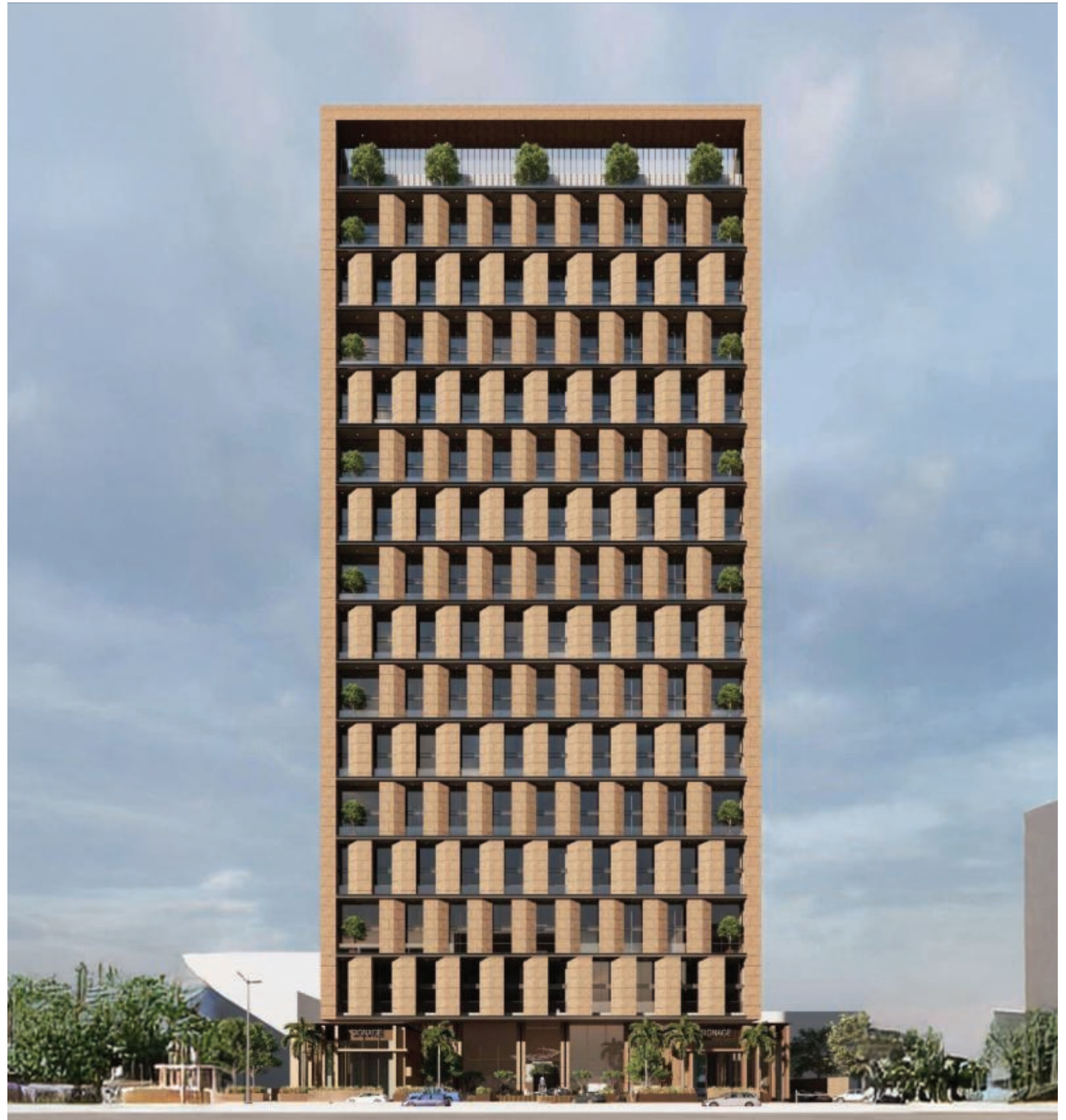
Located in the bustling district of Al-Rahmaniyah, La Gara Tower is a prestigious commercial development featuring a dynamic mix of office and retail spaces. Designed to become a landmark destination, this 31-story tower combines modern architectural design with functional, high-performance environments. Its proximity to STC metro station provides direct access to vital locations including King Abdullah Financial District (KAFD) and the Riyadh Airport making an ideal choice for businesses and retailers.

**Location:** Riyadh  
**Consultant:** RDJW Architecture Consultant  
**Client:** Rafed Arabia RE  
**Status:** Ongoing



Contract Value

240mn





# HEALTHCARE





# AMAALA Hospital



HEALTHCARE

## Project Overview

Located in AMAALA Employee Village, AMAALA Hospital is home to 44 inpatient beds, outpatient care services, and a dedicated diagnostic and treatment zone offering a full range of clinical support functions. Strategically located on the northern edge of the Employee Village, the hospital will serve as a prominent and accessible healthcare hub, visible from the surrounding residential and community buildings. Designed to align with the AMAALA's vision of tranquility and sustainability, this state of art facility is surrounded by thoughtfully designed, landscaped areas that enhance both functionality and aesthetics.

**Location:**  
**Consultant:**  
**Client:**  
**Status:**

AMAALA  
Parson  
Red Sea Global  
Ongoing



**Contract Value**

300mn

\*BEC Arabia has been awarded the finishings, MEP, and medical equipment works





# THARBA MEDICAL CENTER





# Tharba Medical Center



HEALTHCARE

## Project Overview

Located in the peaceful Tharba village within a serene, low-density neighborhood. Tharba Medical Center epitomizes a harmonious blend of functionality, cultural reverence, and architectural sophistication. Designed with utmost sensitivity to the region's rich heritage, this state-of-the-art facility stands as a symbol of healthcare excellence, poised to serve the community's healthcare needs while honoring the region's rich heritage.

**Location:**  
**Consultant:**  
**Client:**  
**Status:**

Tharba, Alula  
Khatib & Alami  
Royal Commission for Al-Ula  
Ongoing



**Contract Value**

140mn





# EDUCATION







## Project Overview

A (PPP) project involving the construction of 60 schools across 44 sites, ranging from kindergartens to high schools. BEC Arabia is a significant partner in the project, holding a 51% stake in a joint venture that is responsible for delivering 31 of these schools.

With a built-up area of approximately 160,000 m<sup>2</sup>, the Wave II Schools are designed to provide state-of-the-art educational spaces that cater to the growing demand for modern learning environments.

**Location:**  
**Consultant:**  
**Client:**  
**Status:**

Madinah  
EHAF Consulting Engineers  
TBC & Vision Invest  
Ongoing



**Contract Value**

1.3bn





# PUBLIC SCHOOLS

(JAZAN & MAKKAH)





## Public Schools (Jazan & Mekkah)



EDUCATION

### Project Overview

Delivered 63 primary, intermediate, and secondary schools in less than two years using BEC Arabia's in-house precast concrete solution, ensuring durability and long-term performance.

**Location:** Jazan & Mekkah  
**Consultant:** Al-Otaishan  
**Client:** Ministry of Education  
& Tatweer Building  
**Status:** Completed



Contract Value

600mn





# FACULTY OF SCIENCE & ART COLLEGE





## Faculty of Science & Art College



EDUCATION

### Project Overview

Located within Jazan University, the sole higher education institution in the province and one of Saudi Arabia's most extensive public, nonprofit universities, the Faculty of Science & Arts College features state-of-the-art classrooms, advanced laboratories, and dedicated research spaces to support both scientific and artistic disciplines. Equipped with modern facilities, student lounges, and a fully integrated library, the college fosters academic excellence while enhancing the student experience.

**Location:** Jazan  
**Consultant:** Al Mousa Consulting Office  
**Client:** Ministry of Education  
**Status:** Completed



**Contract Value**

200mn







# SPECIALIZED DIVISIONS

Our Specialized Divisions are built to meet the evolving demands of modern construction. With a focus on quality, innovation, and efficiency, these divisions operate with a high level of technical expertise to support diverse project needs. From concept to completion, we offer tailored solutions that ensure seamless project execution and long-term value. Our integrated approach allows us to deliver excellence across every discipline, reinforcing our reputation as a trusted partner in the industry.



# INFRASTRUCTURE WORKS





# Infrastructure Works



INFRASTRUCTURE

## Overview

We deliver comprehensive infrastructure services tailored to the diverse needs of modern construction projects. With extensive experience in managing and executing complex infrastructure work, we offer complete, end-to-end solutions that cover every aspect of construction. Our services include:

- Site preparation & earthwork
- Roads & bridges
- Master planning
- Advanced utility systems
- Stormwater management
- Wastewater treatment systems
- Water supply systems
- Electrical and communications networks





# HERMA PROJECT





# Herma Project



INFRASTRUCTURE

## Project Overview

Design and construction of initial infrastructure works for Herma, a new Ministry of Housing residential district.

Scope of work included earthworks, site enablement and preparation, roadworks, sewage treatment network, stormwater drainage system, and the construction of box culverts.

<b>Location:</b>	Majma'a
<b>Consultant:</b>	Zuhair Fayez Partnership
<b>Client:</b>	National Housing Company
<b>Status:</b>	Completed





# LANDSCAPING & PLANTATION





# Landscaping & Plantation



LANDSCAPE

## Overview

In line with Vision 2030 and Saudi Arabia's afforestation ambitions, BEC Arabia offers sustainable plantation, vegetation, and transplantation services aimed at saving water and energy. We focus on utilizing unused spaces and converting them into life-enhancing environments. Our efficient and innovative landscaping services are designed to transform outdoor spaces into visually appealing and functional areas. From vibrant greenery to stunning hardscape designs, we turn spaces into vibrant, life-enhancing landscapes that leave a lasting impression. Our services include:

- Softscape
- Hardscape
- Plantations
- Irrigation systems
- Lighting design & installation
- Water features





# AL OSAILAH NURSERY





## Al Osailah Nursery



LANDSCAPE

### Project Overview

An environmentally-conscious project focuses on the sustainable management and enhancement of the Kingdom's natural landscape. It involves the grooming and maintenance of 15,000 palm trees, the cutting and shredding of 10,000 palm trees, and the transplantation of 15,000 palm trees alongside 7,000 native trees, including doum palms, which hold significant cultural and heritage value to the Kingdom.

**Location:**  
**Consultant:**  
**Client:**  
**Status:**

Al Osailah Future Nursery  
BECHTEL  
NEOM  
Ongoing





# MNEIFA NURSERY





# Mneifa Native Plant Nursery



LANDSCAPE

## Project Overview

As part of NEOM's greening efforts, BEC Arabia is managing and operating the Mneifa Native Plant Nursery to support large-scale environmental restoration. The nursery produces 2 million native plants annually, including trees, shrubs, and grasses, helping to restore natural habitats and promote biodiversity. Covering 4.6 hectares, it is fully equipped with greenhouses, shaded areas, a seed bank, and renewable energy systems.

**Location:**  
**Consultant:**  
**Client:**  
**Status:**

NEOM  
BECHTEL  
NEOM  
Ongoing





# ELECTRO-MECHANICAL SERVICES (MEP)





# Electro-Mechanical Services (MEP)



## Overview

We provide efficient and sustainable solutions through mechanical, electrical, and plumbing systems. With a highly skilled in-house team, we ensure seamless integration into building designs, enhancing performance and reliability while maintaining the highest standards of quality. Our services include:

- HVAC systems
- ELV systems
- Chilled water systems
- Fire protection systems
- Building management systems (BMS)
- Power distribution systems
- Low voltage systems
- Power generating and UPS System
- Renewable energy solutions
- Water supply systems
- Drainage and sewage systems
- Data centers





# OUR CLIENTS





# AWARDS AND RECOGNITIONS

## Company Awards



Offsite Project of The Year



Contractor of the Year 2025

Hospitality Project of the Year 2025



Growth Champion Award 2025



نيوم, NEOM

HSE Achievement Award 2023



#10 Top KSA Contractors 2025

Health & Safety Initiative of the Year 2023

Residential Project of the Year 2022



Construction Entrepreneur of the Year 2023



Best Construction Company 2022

## Client Recognition

Safety Excellence by Royal Commission AIUla 2025

Project Quality Excellence by Red Sea Global 2024

Certificate of Achievement by the Ministry of Interior 2024

Contractor of the Month by Red Sea Global 2024

Environmental Performance Appreciation by NEOM 2024

Environmental Performance Appreciation by UNEP 2024

Environmental Performance Appreciation by Red Sea Global 2024





# OUR PARTNERS IN EXCELLENCE





# FINANCIAL STRENGTH



5 BN

Credit Line



# OUR COMMITMENTS





A yellow industrial tower structure, possibly a drilling rig or oil platform, is visible on the left side of the image. It has a complex lattice of beams and a platform at the top.

# HEALTH & SAFETY

## Working Together for A Safer Tomorrow

At BEC Arabia we prioritize the well-being of our employees, and everyone involved in our operations, including the environment in which we operate. Effective safety management is at the core of our business practices and our moral obligation as a responsible company. We understand that accidents and incidents can have long-lasting impacts and therefore remain fully committed to ensuring that all our operations are conducted with the highest safety practices.

As part of BEC Arabia's strategic vision, we have developed and implemented an extensive Health and Safety Management System across every aspect of operations to minimize any potential risks and hazards that may arise on our worksite. Our Health & Safety Management System is accredited to and complies with the local legislation and requirements of the international standard of ISO 45001, 14001, and 9001 certificates.



# SUSTAINABILITY

## Making A Positive Impact on the Environment

Sustainability is our strategic approach to building a legacy for future generations, we understand the profound impact that the construction industry can have on our natural resources and the environment. As a result, we prioritize integrating sustainable practices into all facets of our operations, ensuring that our activities, policies, and procedures align with environmentally responsible principles.

### **Sustainable Materials**

We use only environmentally friendly and sustainable materials in our projects to reduce our environmental impact while creating long-lasting and durable structures.





### Water Consumption and Greenhouse Gas Emissions

We are actively implementing measures to reduce water consumption across our construction sites. In alignment with our long-term sustainability goals, we have committed to reducing carbon emissions from our operations by 30% by the year 2030.

### Waste Reduction

We are mindful of the waste our job sites generate, diverting construction waste from landfills—more than five thousand tons of waste diverted from landfills in 2024.

### Clean Energy

Harnessing solar energy to produce electricity is one key to addressing climate change and reaching net-zero targets, BEC Arabia uses solar panels to power our projects whenever possible. By harnessing the power of the sun, we reduce our dependence on non-renewable energy sources and promote a cleaner future, while also saving our clients' money in the long run.

### Modular and Prefabrication

BEC Arabia adopts modular construction and prefabrication as a core component of its project delivery strategy as part of its commitment to sustainability and operational excellence. By utilizing off-site manufacturing methods, we are able to streamline construction processes, reduce environmental impact, and maximize the efficient use of resources.

### Green Building

BEC Arabia builds to the highest certification standards, we work closely with our clients and partners to ensure that every project meets the highest global and national standards for sustainability. Our diverse portfolio reflects this commitment, featuring projects recognized with prestigious certifications such as LEED Platinum, LEED Gold, LEED Certified, Estidama Pearl, and Mostadam Diamond.





# QUALITY

## Building Trust Through Quality

Our quality management system ensures delivering and maintaining the highest level of quality at every step of our integrated services by complying with the latest building standards and all international and local legislation requirements, as well as the specific needs of our clients. As a vertically integrated construction conglomerate, it is fundamental to ensure legal compliance and maintain consistency throughout our operations. To mitigate risks and enhance customer satisfaction, we have identified key performance indicators for our projects and personnel that allow us to continually monitor and evaluate the effectiveness of our services.

Our corporate quality policy and practices are aligned with the latest ISO International Standards for Quality Management Systems, ensuring quality is maintained from project initiation to completion. We invest in continuous training and development to empower our workforce and foster a culture of accountability, collaboration, and excellence.





# INNOVATION



## Strategic Solutions for the Digital Age

The region is intent on developing smarter communities powered by the latest technology, so it is essential for us to offer digitally integrated processes and solutions that are driven by innovation. Through our commitment to digital transformation, we have become more agile, efficient, and streamlined. From project management tools that provide real-time communication and project overviews to cloud technology, RFID, GPS, and drones, technology enables us to plan and track the progress of projects, optimize the distribution and utilization of assets, monitor the productivity of our labor force so we can train them more effectively and enhance safety. Because we readily adopt the latest technologies early on, we have a competitive advantage and can deliver progressive value-added services to our clients.



**BEC** العربية  
ARABIA  
BUILDING SUCCESS STORIES

 **BEC Arabia**

 **@BEC\_Arabia**

 **becarabia.com**